

Looking for a top-quality PhD program? Interested in Chemical Biology?  
Excited to explore new challenges in Konstanz-Germany & Singapore?



## KoRS-CB - NTU Joint PhD Program in Chemical Biology

### Program Content

- Joint PhD Program between Konstanz Research School Chemical Biology, Germany (KoRS-CB, University of Konstanz, Germany) & School of Biological Sciences (SBS, NTU)
- Intake – January and August
- **Scholarship granted for 4 years** (university fees at both universities + stipend)
- Airfare grant for time spent in Konstanz.
- Thesis: Research project in chemistry / biology / biochemistry as a core curriculum.
- Project carried out in both Singapore & Konstanz.
- International program board (Konstanz- and NTU Professors)
- Opportunity to attend training workshops and international scientific conferences.
- Degree awarded by both Nanyang Technological University (NTU) & University of Konstanz.

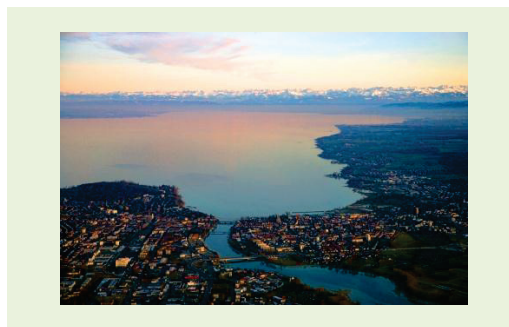
### Attractive Scholarship Includes:

#### International Students:

- University fees
- Monthly stipend
- Airfare grants
- Medical Insurance
- Campus housing

#### Local Students:

- University fees
- Monthly stipend
- Conference allowance
- Campus housing



### About KoRS-CB, University-Konstanz

- Founded in 2007, KoRS-CB has been receiving continuous funding within the framework of the Excellence Initiative by the German Federal and State Governments
- Interdisciplinary research and training at the interface of chemistry, biology, and computer & information science
- Priority research areas: Synthetic Chemistry, Cellular Biochemistry, Biomedicine, Biophysics, Computational Life Science
- Intensive supervision by thesis committees; the research driven education is flanked by seminar series, retreats, scientific courses, and transferable skill & management courses
- International networking & collaborations with renowned partners in academia and industry
- You can browse <http://www.chembiol.uni-konstanz.de> to find out more information about *Konstanz Research School Chemical Biology* and research areas

### About SBS, NTU

- NTU - among world's 50 top-ranked universities.
- Founded in 2002, the *School of Biological Sciences*, SBS had a mission to make a strong contribution to biological and biomedical sciences
- Strong achievements in the areas of Peptide Chemistry, Drug Discovery, Genetics & Disease, Immunology, Infectious Diseases, Protein Engineering and Structural Biology
- Strong Master and PhD program, including high quality hands-on courses and 260 graduate students
- Equipped with the most advanced instruments and technologies for life sciences research
- You can browse <http://www.sbs.ntu.edu.sg/prospective/graduate/Pages/Home.aspx> to find out more information about research and the Graduate Programme of the *School of Biological Sciences*



Interested candidates should visit <http://www.sbs.ntu.edu.sg/prospective/Graduate/Pages/NTUKoRS.aspx> for details about the [projects](#) and [application process](#)

For enquiries about this PhD Program, please contact Mr Raymond Lee at [RKLLEE@ntu.edu.sg](mailto:RKLLEE@ntu.edu.sg)



School Biological Sciences  
60 Nanyang Drive  
Singapore 637551  
Tel: (65) 6316 2958  
[www.sbs.ntu.edu.sg](http://www.sbs.ntu.edu.sg)



Konstanz Research School Chemical Biology  
University of Konstanz  
Universitätsstraße 10  
D-78457 Konstanz - Germany  
[www.chembiol.uni-konstanz.de](http://www.chembiol.uni-konstanz.de)